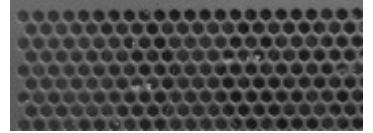


BUY ON

www.cablematic.com



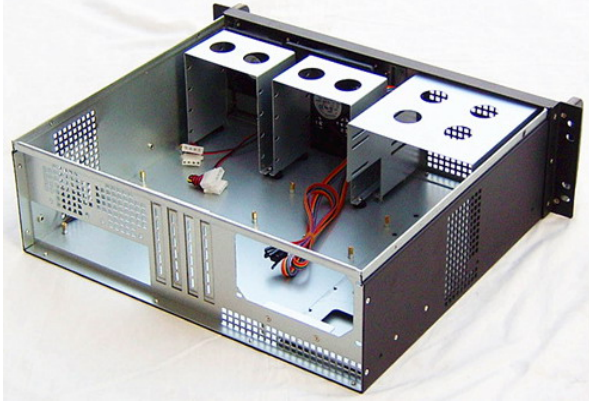
Option for Six angle hole

### Introduction

Is a ultra compact chassis with 15" depth ,max 3\*5.25+4x3.5" HDD space for wide range application Support ATX PS2 powersupply for regular server

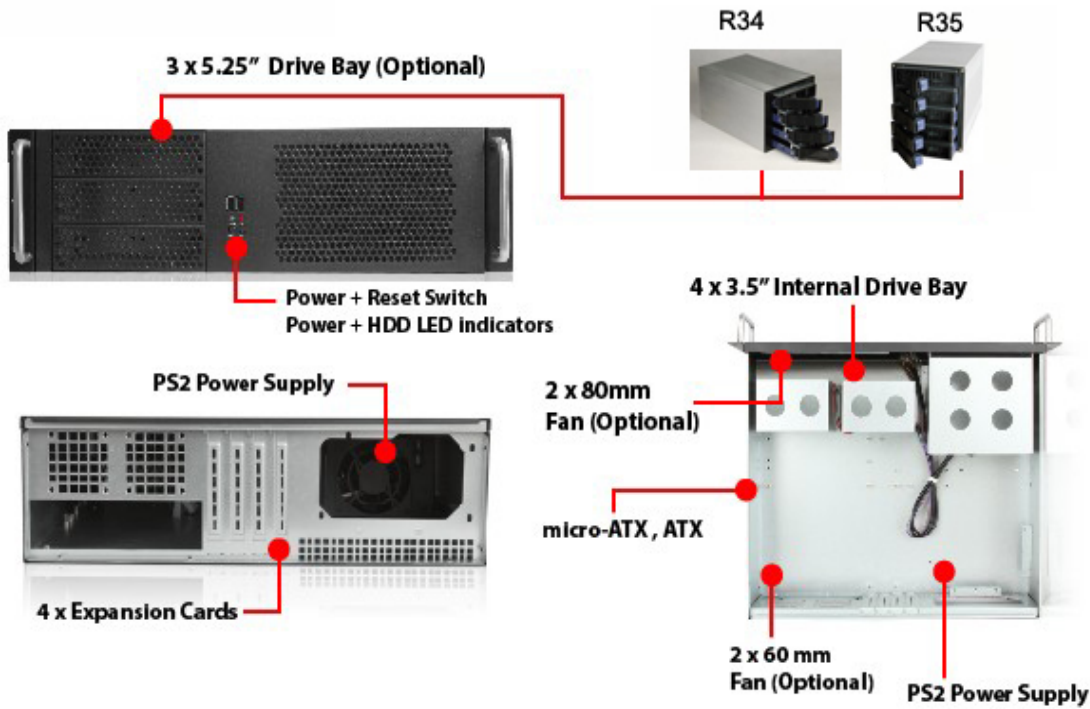
### Features and Benefits

- Support (2+1) \*5.25 space+4x3.5" HDD space
- High density chassis support ATX / Micro ATX Motherboard and PS2 ATX Powersupply



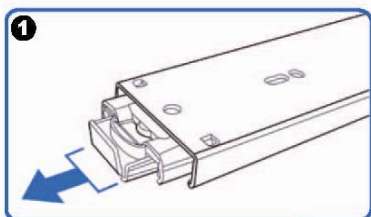
### Specification

Dimension (W*H*D)	19"*5.25"*15.35"/ 482*133.3*390 (mm)
Material Construction	Heavy-duty & Rugged steel 1.0mm
M/B Size	12 x 9.6 (ATX, microATX, mini-ITX) 1. When ATX MB installed, the available 5.25" driver bay will reduce to 2 bays, because the ATX MB and the bottom 5.25" conflict. 2. When Micro ATX MB installed, the 5.25" driver bay will be 3 bays
Expansion	4 slots full height rear side ATX 1*Power switch +1* Reset switch
Control & Indicator	1 x LED(power) +2 x LED(HDD) 2*2.0 USB
Cooling Fans	2 x 8025 fan in take + 2x6025 at rear(option)
DriveBay	3*5.25 +4 x 3.5"(Internal)
Power Supply	PS-2 ATX powersupply
Sliding rail	20" ball bearing sliding rail (option)
Color	Black / Red / Bule / Green / Silver
Operation Temperature	Up to 50C (122°F)
Operation Humidity (Non-condensing)	Up to 90%
Packing Measurement CBF / CBM	2.5/ 0.07
Packing N.W / G.W	6.0KGS / 7.5KGS

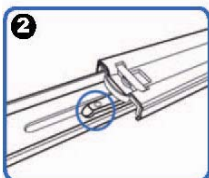


**Option: Three-Sections Heavy-Duty Solid Ball-Bearing Sliding Rails**

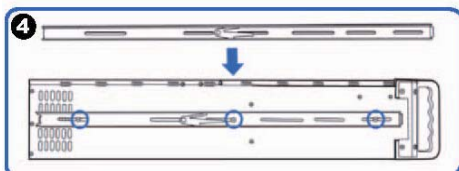
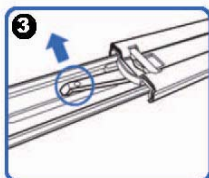
Features: Universal Design to match almost all chassis on market, Heavy-Duty Slide Ball Bearing  
 Built-in stop-latch, lock chassis in extended position for easy access ,  
 Simply pressing on the plastic levers on each side and slide your case back into the cabinet  
 Warranty: 1 Year



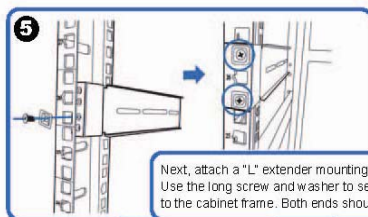
1 (Pull the center slide all the way out until it reaches the end)



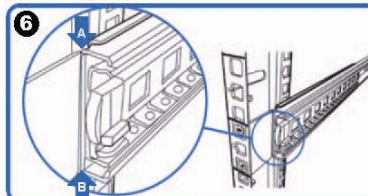
2 You will see a locking clip at the end point of the center slide. Push it down and unlock the center slide.



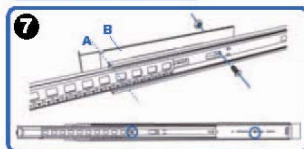
4 Now put the center slide right next to the rackmount chassis. You should be able to find screw holes on both sides of chassis. Holes are used for mounting the center slide. Later the center slide will be used for attaching the sliding rail.



5 Next, attach a "L" extender mounting bracket on to the cabinet. Use the long screw and washer to secure the "L" extender bracket on to the cabinet frame. Both ends should have the extender bracket.



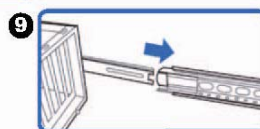
6 Align front outer rail to the indent of L bracket between Point A & B.



7 Secure outer rail to L bracket with screws and nuts.



8 Repeat previous steps to secure sliding rails on both sides.



9 Reattach inner rail back to center rail.